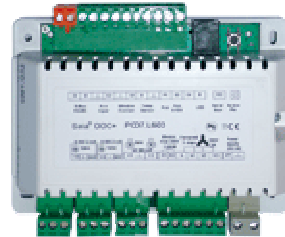


---

## Enhancements of room automation system PCD7.L60x

---



Murten, 22.09.2009

Dear Ladies and Gentlemen

We like to inform you about enhancements of the existing products of the S-Bus room controller family PCD7.L60x.

The controller firmware and F-Box library has been updated and respects a lot of your wishes and feedbacks we collected since the last months.

These new features will help you to place the product line in a wider range of applications.

- radiator / roof cooling applications
- using of different dew-point sensors types

## 1. New firmware version

The new features are supported from hardware version V1.2 and firmware version SV1.11.

### New Features:

- Adjustable mixing of PWM and 0-10V outputs for cooling and heating
- Adjustable timer before authorizing again the cool valve after dew point alarm removal

### Fixed problems:

- "Electric Heat" output K 1/2 in RIO mode removed security mechanism (switched off after 15 minutes for 2 minutes => for battery)

(If the RIO-Function is not needed, then it is also not necessary to have this fixed version)

## 2. Description of the new features and fixed problem

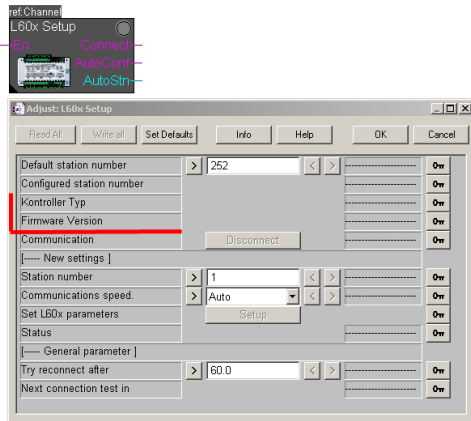
### Compatibility of the new firmware

All the new features are supported by the new Config-FBox. The parameters with information about the required controller software version are placed as topic over the new functions at the bottom of the adjust window.

All changes are compatible with the previous controller versions therefore it's possible to use the new FBoxes for existing and new controllers.

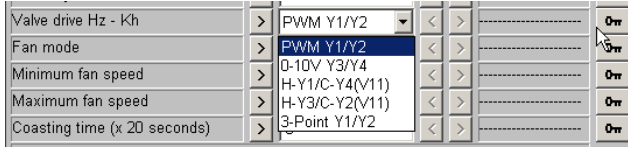
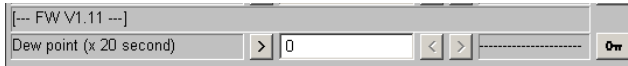
In previous versions the new registers are simply ignored. Of course existing controllers could not be loaded with the new firmware but the Setup FBox provides information about type and firmware version.

### Check of firmware version in the Setup FBox



When a communication to a room controller is established the controller type and firmware version are displayed in the adjust window. There it is also possible to see if the controller supports the new features (beside of the number on the case-sticker)

## Configuration FBox Features



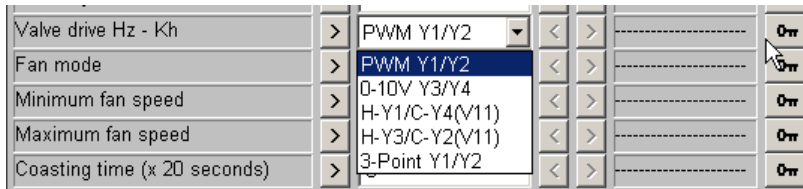
The section of the new the parameter “Dew point” starts with a header “FW 1.11” and the new “Mixing Output” modes are selectable in the existing bar “Valve drive Hz – Kh”

The controller needs in minimum the firmware version 1.11.

### Mixing of PWM and 0...10V Outputs

Now it is possible to mixing of PWM and 0...10V Outputs. This means you can choose for heating the PWM outputs and for cooling the 0...10V outputs or reverse.

So it is now possible to drive over the Room-FBox also radiator / roof cooling applications.



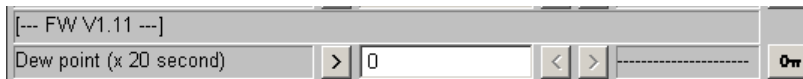
### Timer for Dew Point

When E2 is configured as dew point, it has a timer before authorizing again the cool valve after dew point alarm is removal.

This timer can be parameterized in the config FBox in a period of time with a value multiplied by 20sec.

When the dew point alarm is triggered, the fan speed will switch to step 1 until the dew point timer is expired.

With this new function it can be avoid that the cooling-valve switching always on and off when the conditions are at the threshold of the dew-point.



## Fixed problem

### K 1/2 in RIO mode

If the "Electric Heat" output K 1/2 of the PCD7.L60x room controllers is written to 100% in RIO mode, it was still switched off after around 15 minutes for 2 minutes on the firmware version 1.08 or older of the room controller (called SV on the label sticker of the module).

This feature has been implemented as "security mechanism" for the case that a battery is connected to the K 1/2 output. As the experience has shown that this feature is not required, it is removed in firmware version 1.11.

(If the RIO-Function is not needed, then it is not necessary to have this fixed version.)

